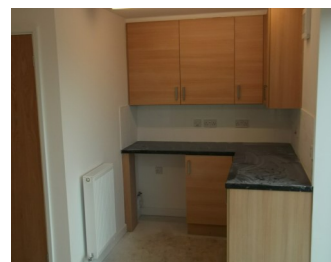


SIX, 2 BEDROOM HOUSES
£116,500
(75% of market value)



Croft Mear, Lower Boscaswell, Pendeen, TR19 7BW
(End of Moorland Close)

Each home has a garden, sea views, fitted kitchen and heating by air source heat pump. Primary school and local shop close by.

Purchasers will need to show at least a 3 year connection to Cornwall (either working or living).

For more information and to view ring Sue on 01736 787223

ALSO AVAILABLE

Two, 2 Bed Bungalows
£167,500

These are open market properties so there are no restrictions on their sale. For further information and to view bungalows please contact **Wilkins Estate Agents (St Just)** on **01736 787071**.

The Lands End Peninsula Community Land Trust is a charity and not-for-profit company. This project has been supported by Cornwall Council grant funding.

Lands End Peninsula CLT Ltd. Company No. 7129906, Charity No. 1142814

www.landsendpeninsulact.org.uk